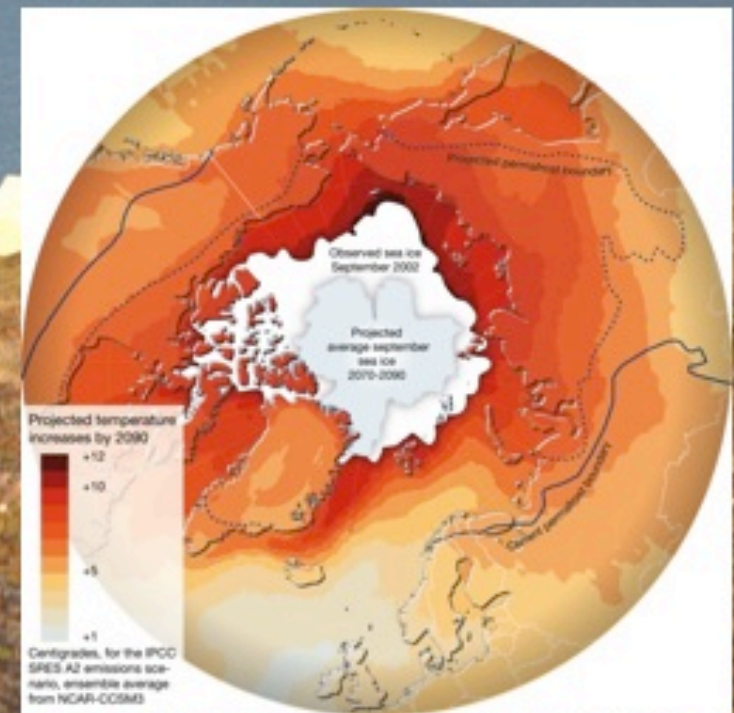
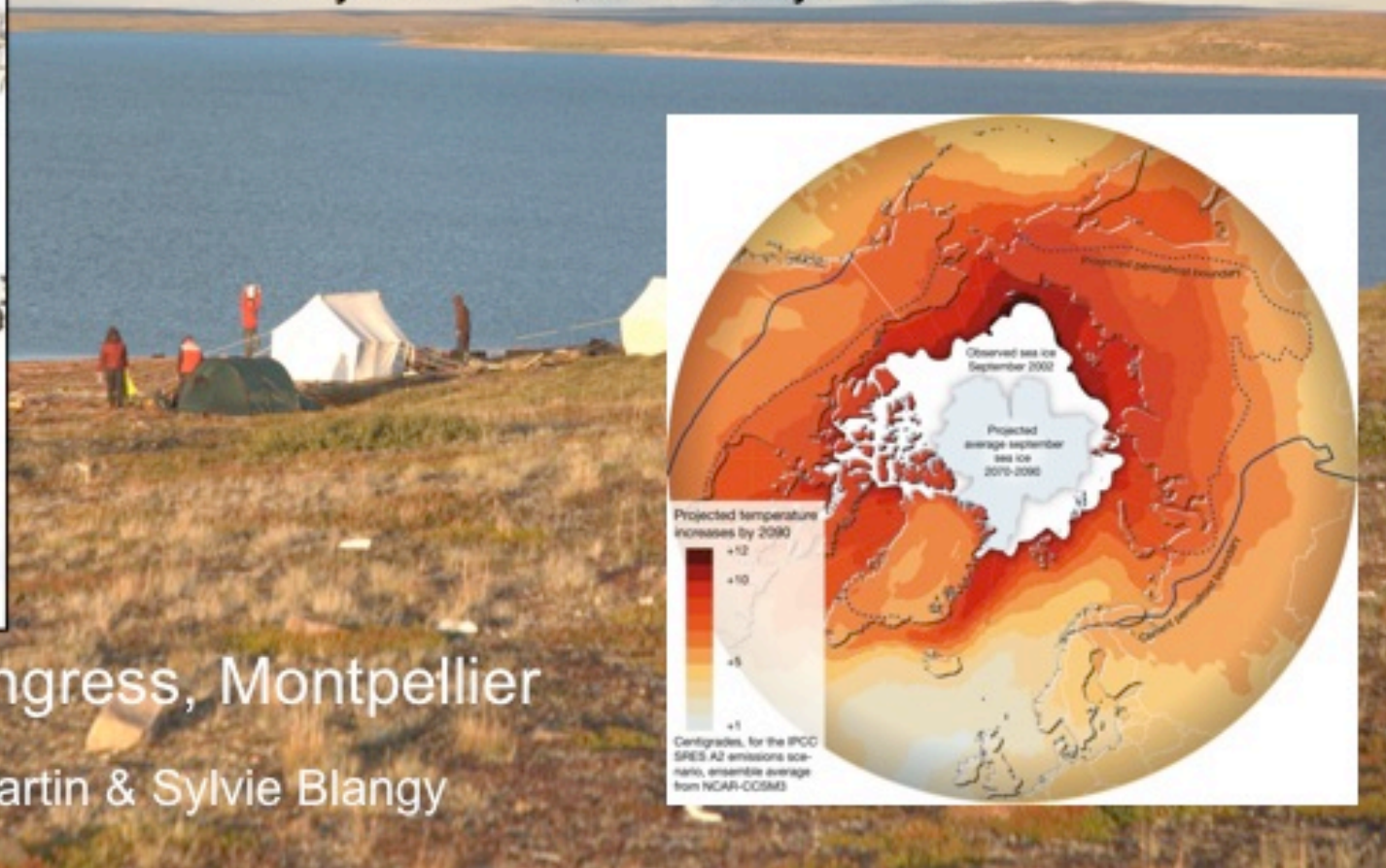


From Knowledge to Action in Northern Indigenous Communities: Collaborative Research

Sylvie Blangy, CEFE, CNRS

Holly Donohoe, University of Florida



Ethnobiology Congress, Montpellier

Photos; Jean-Louis Martin & Sylvie Blangy

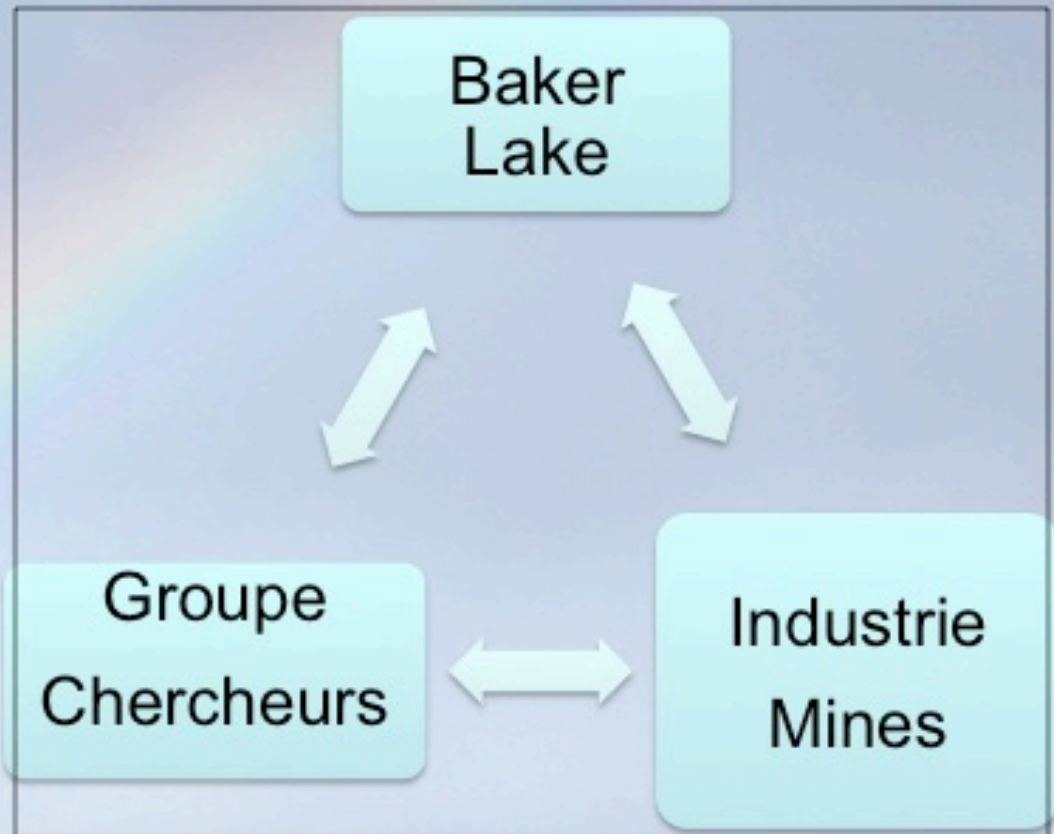
3 Collaborative research models



Mainstream research



Cross cutting research between 2 or 3 communities



Triangular collaborations; Community, university & industry alliances

Network of arctic researchers

3 groups

13 communities,

INUIT, Nunavut

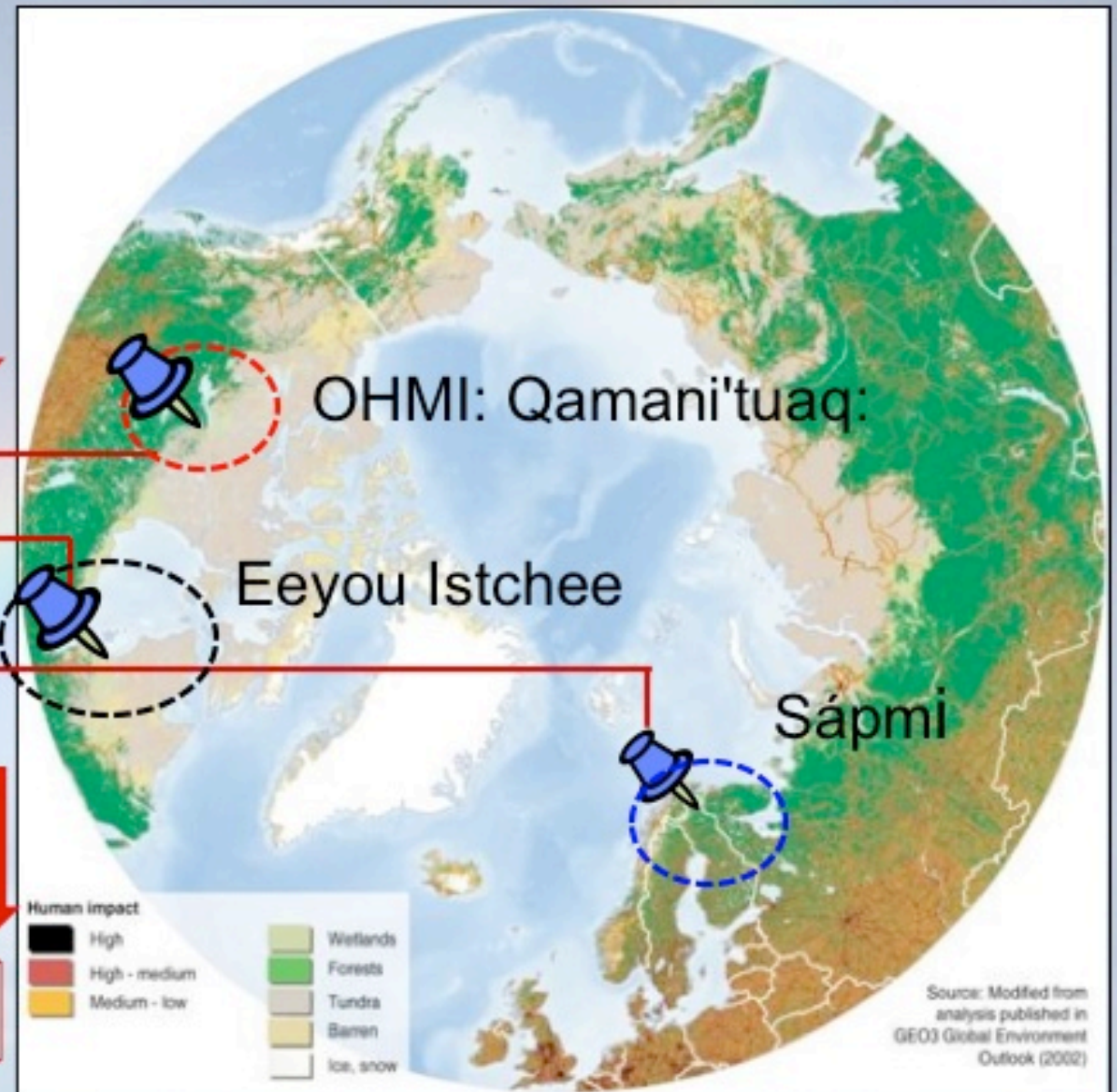
CRI, Québec

SAAMI, Sweden

10 universities

canadians, scandinavianians

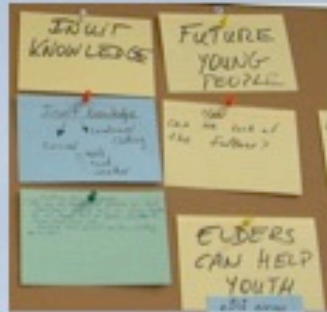
International Workshops, Ottawa, Québec, Paris



Social engagement techniques



Mapping



Free Listing

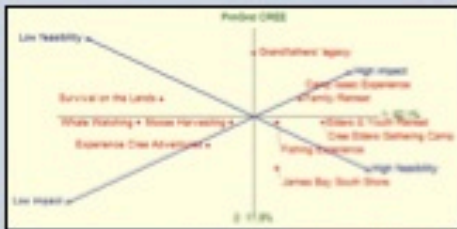


Stakeholder analysis

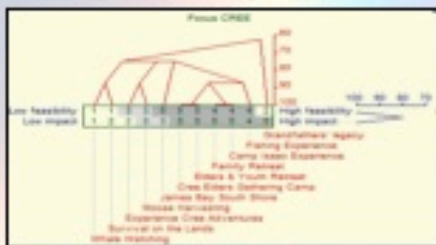


Factors at risk:
Force & Field;

Socio-constructivist theory



Co-producing knowledge;
Domain analysis



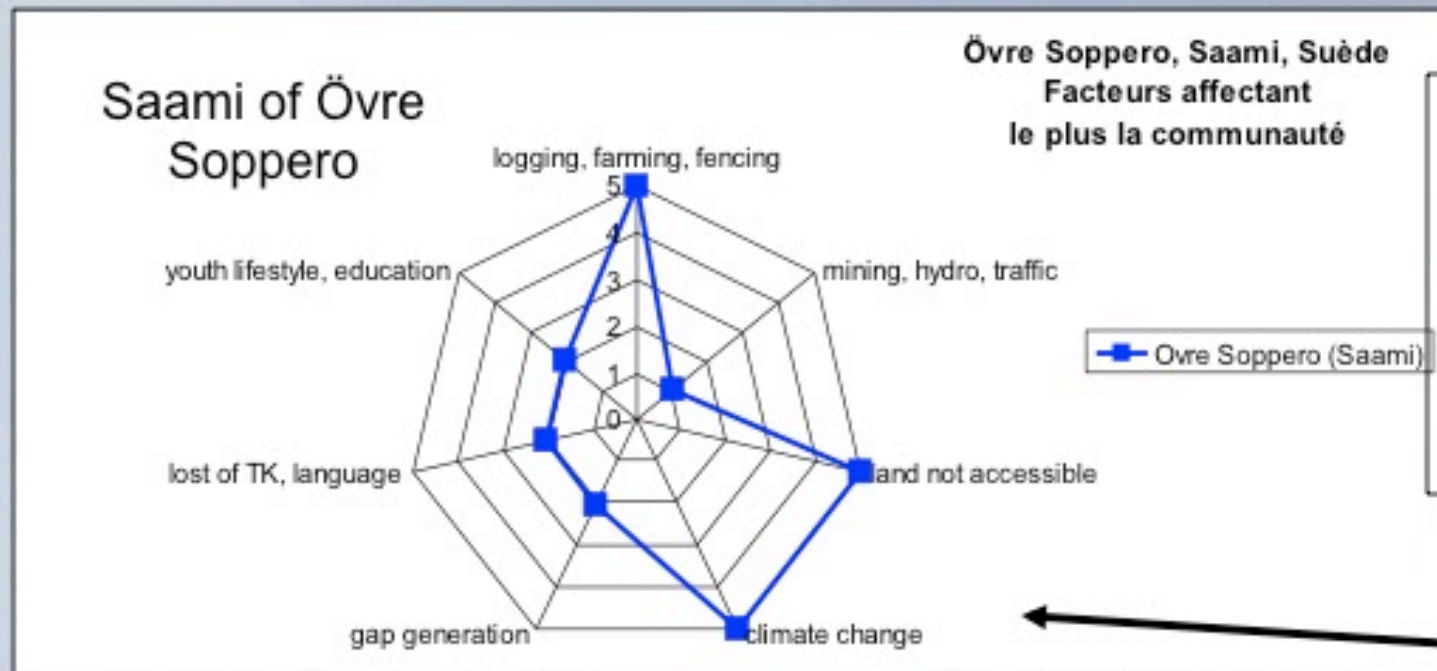
Comparing: causal dynamics



Evaluating; the wheel

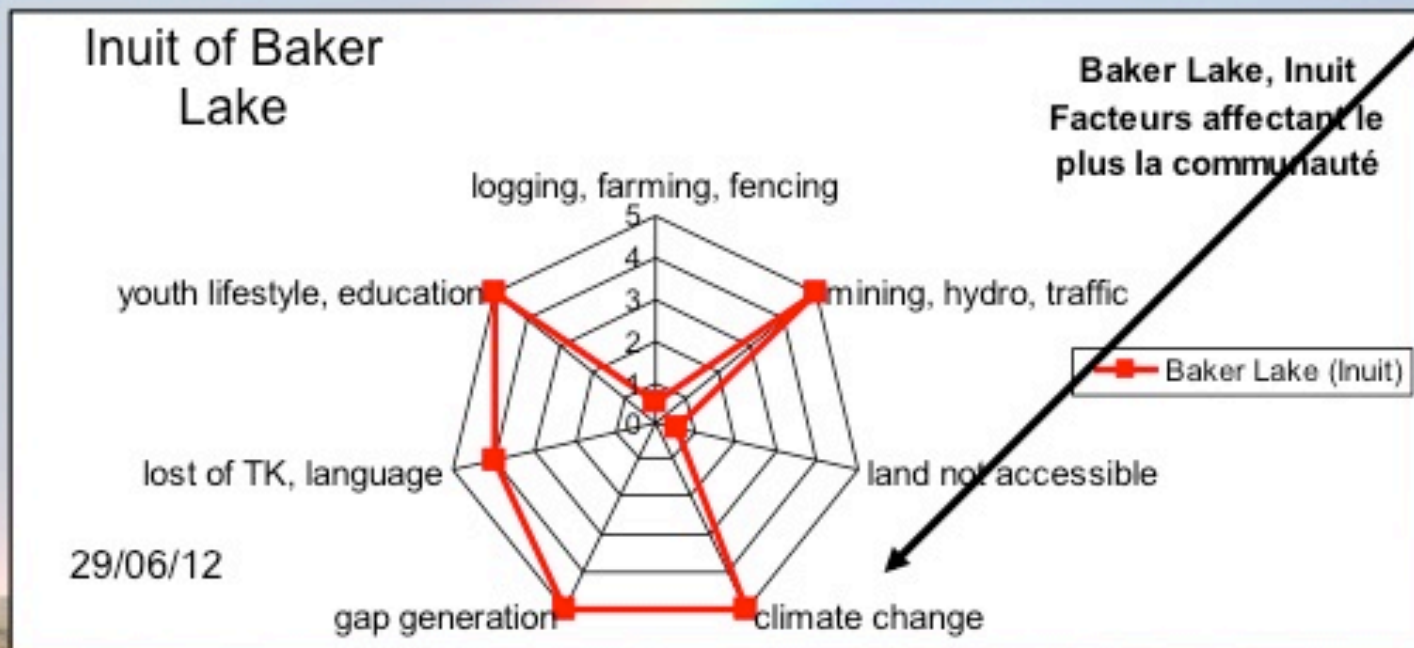


What are Factors affecting the most community members?



- Land access
- Cross border passage
- Logging

Climate Change



- Mining
- Generation gap
- Youth lifestyle
- Lost of traditional knowledge

29/06/12

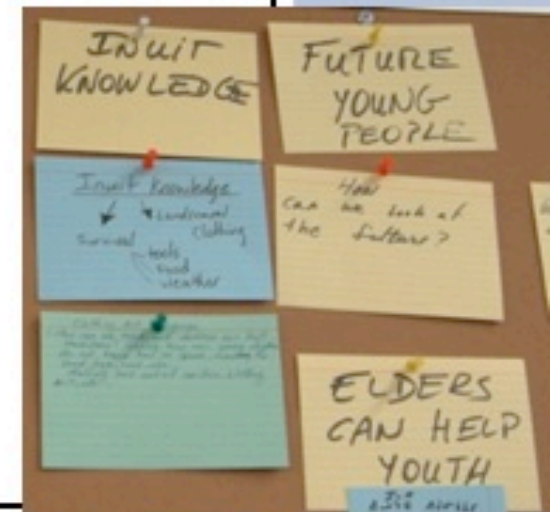
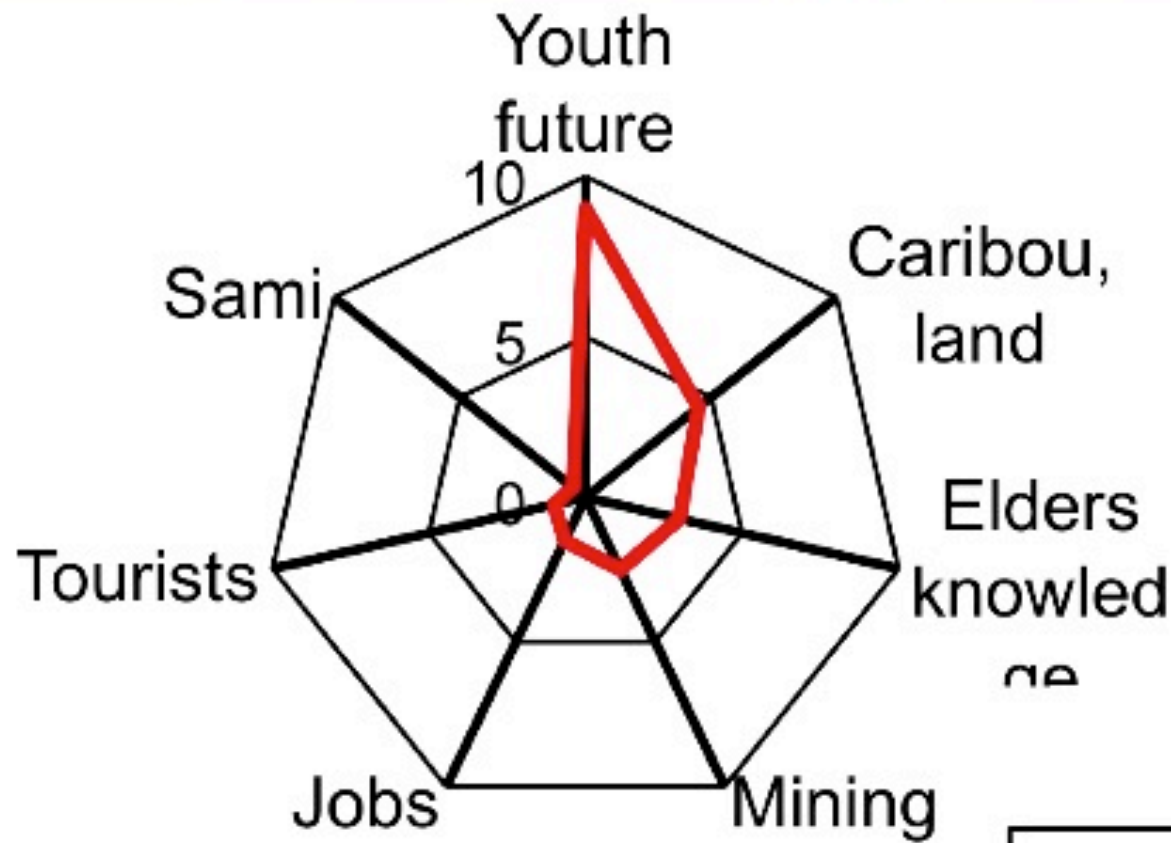
Caribou Inuit and Saami reindeer Herders

Share traditional livelihood based on same species
Rangifer tarandus

Face similar challenges (climate, mining, hydroelectric development, logging...)



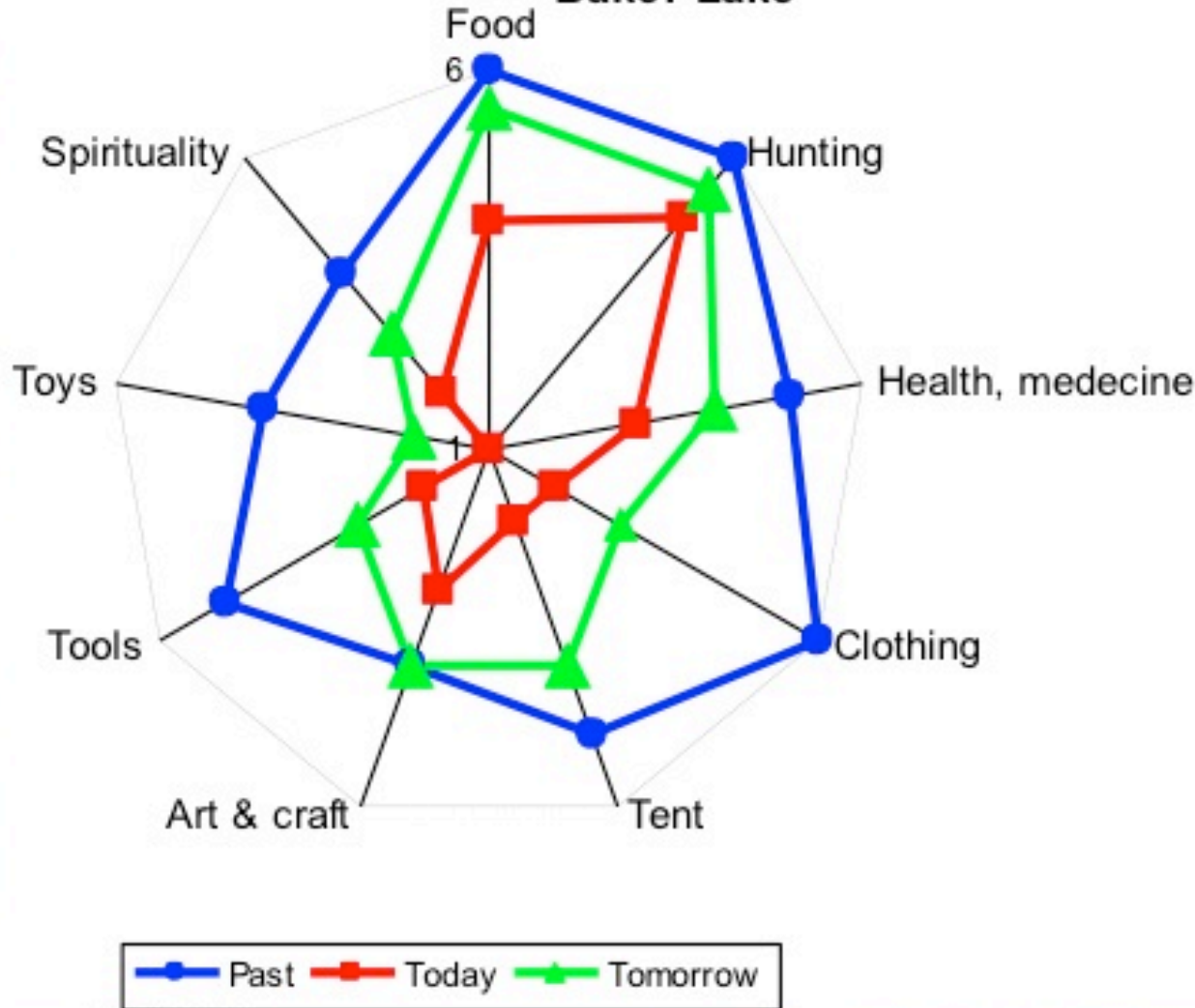
Youth Future, caribou livelihood, Elders Knowledge in Baker Lake



Caribou and Reindeer livelihood

In what ways do you use Caribou today?

Baker Lake



Caribou



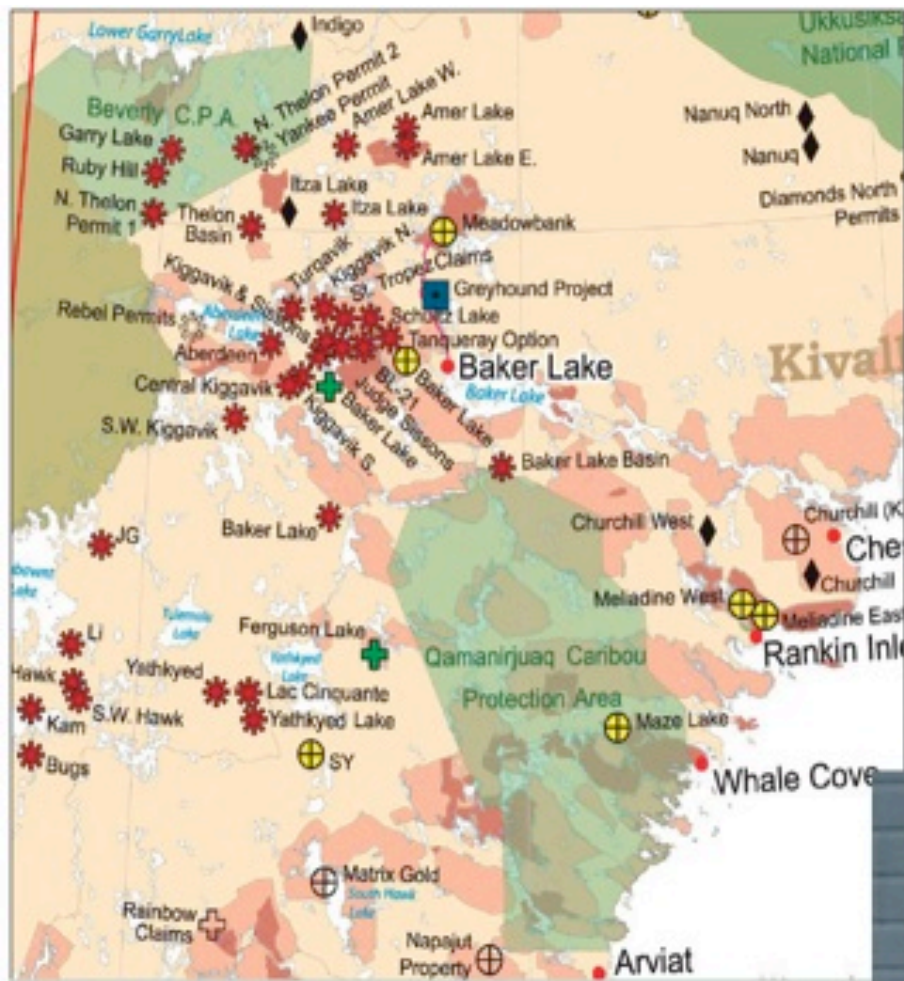




visiting their traditional grounds
Re visiting the traditional grounds from 1957



29/06/12



20 uranium, gold mining exploration sites



high impact on calving grounds & caribou migration patterns

<p>Commodity Groupings</p> <ul style="list-style-type: none"> Gold Diamond Precious Metals Nickel-Copper-PGEs Base Metals Uranium Coal Gemstone Iron Inactive Sites have NO SI 	<p>Land Claim Settlements</p> <ul style="list-style-type: none"> Nunavik Settlement Area
<p>Protected Areas</p> <ul style="list-style-type: none"> National Park (N.P.) Territorial Park (T.P.) Migratory Bird Sanctuary (M.B.S.) National Wildlife Area (N.W.A.) Terrestrial Wildlife Area (T.W.A.) Caribou Protection Area (C.P.A.) 	<p>Administrative Boundaries</p> <ul style="list-style-type: none"> Indian and Northern Affairs Canada <p>Geological Mapping Programs</p> <ul style="list-style-type: none"> Canada-Nunavut Geoscience Office <p>Transportation Routes</p> <ul style="list-style-type: none"> Meadowbank Road

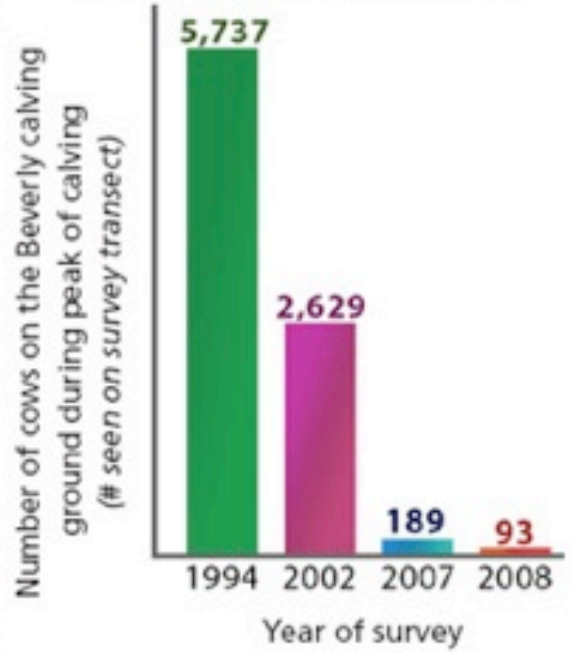
29/06/12

Inuit Owned Lands

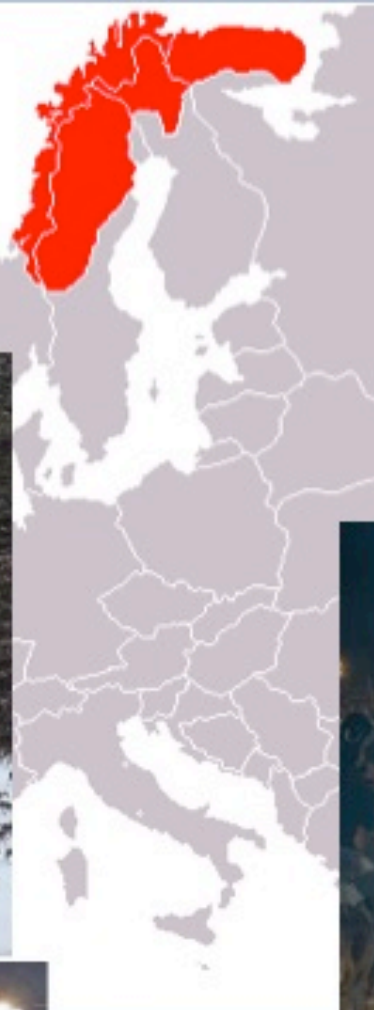


Exploration in the Kivalliq, 2008.

Declining numbers of cows on Beverly calving ground



Övre Soppero,
Sapmi, Sweden
90% involved in
reindeer herding



Map 4.6 Areas of reindeer husbandry in Sweden

Ulf Hansson © Lantbruksverket, Gäddö 2002, Högskolan i Umeå



- Områden som nyttjas av flera samebyar
- Äretrunnsmark
- Vinterbetesmark
- Koncessionsrensösktsel
- Odlingsgräns
- Lappmarksgräns
- Gräns för renbetesfjäll
- Fastställd samebygräns
- Länsgräns



1. KÖNKÄMÄ
2. LÄRNÖVUOMA
3. SAARIVUOMA
4. TALMA
5. GABNA
6. LAEVIS
7. GIRJAS
8. BASTE
9. SÖRKATTUM
10. SIKKAS
11. JÄHKÄGASSKA
12. TUORPON
- 13a-c. LUOKKA-BÄRNS
- 14a-c. SEMISJAU-NUANG
- 15a-c. SWIPA
- 16a-c. GRAN
17. RAN
18. URMEJE
19. VÄPSTEN
20. VILHELMINA NORRA
21. VILHELMINA SÖDRA
22. FROSTVIKENS NORRA
23. ÖHREDAHKE



Land access, logging, cross border migration



29/06/12

Data management and observing networks

Communautés Laboratoires Projets recherche Scenarios Questions Résultats Forum

Inuit

GEOLAB

Caribou

Cri

Museum

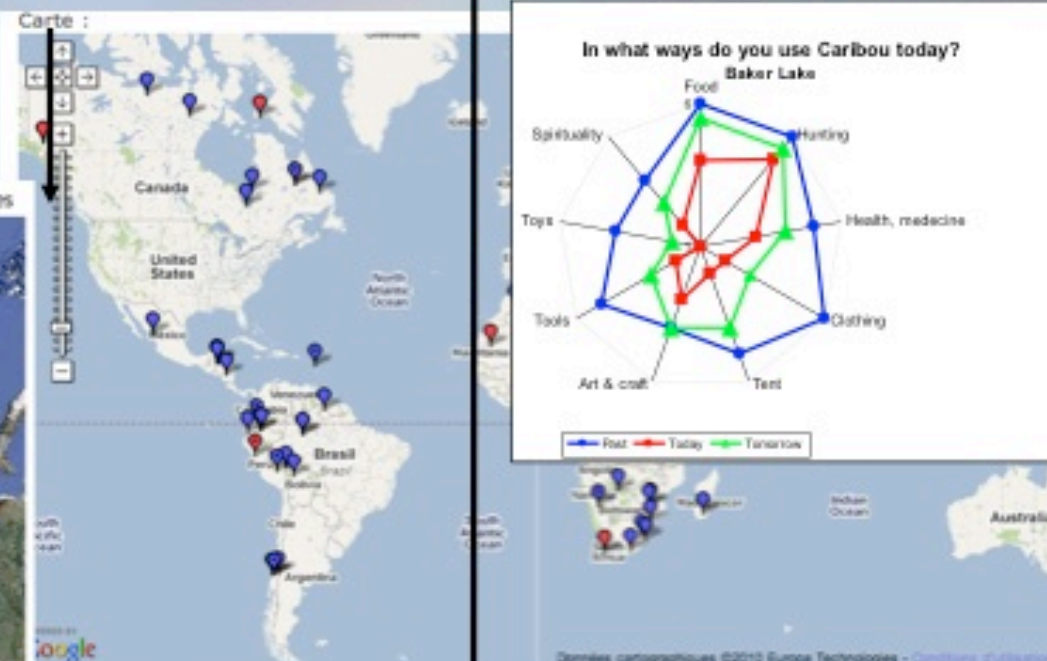
Plantes

Saami

UQAM

Paysage

Taille maxi | Voir dans Google Earth | Carte | Satellite | Empreinte des hommes



Do you consider your community to be located within a biodiversity hot spot? A hot spot is an area of high biological diversity with a high rate of endemism

- [A : 22%] We do not live in an area of high biodiversity
- [B : 77%] We live in an area of high biodiversity



Exchange for Local Observations and Knowledge of the Arctic

How do we address those priorities?

Inuit/Saami collaborations & perspectives

Caribou livelihood book (Elders/Youth)

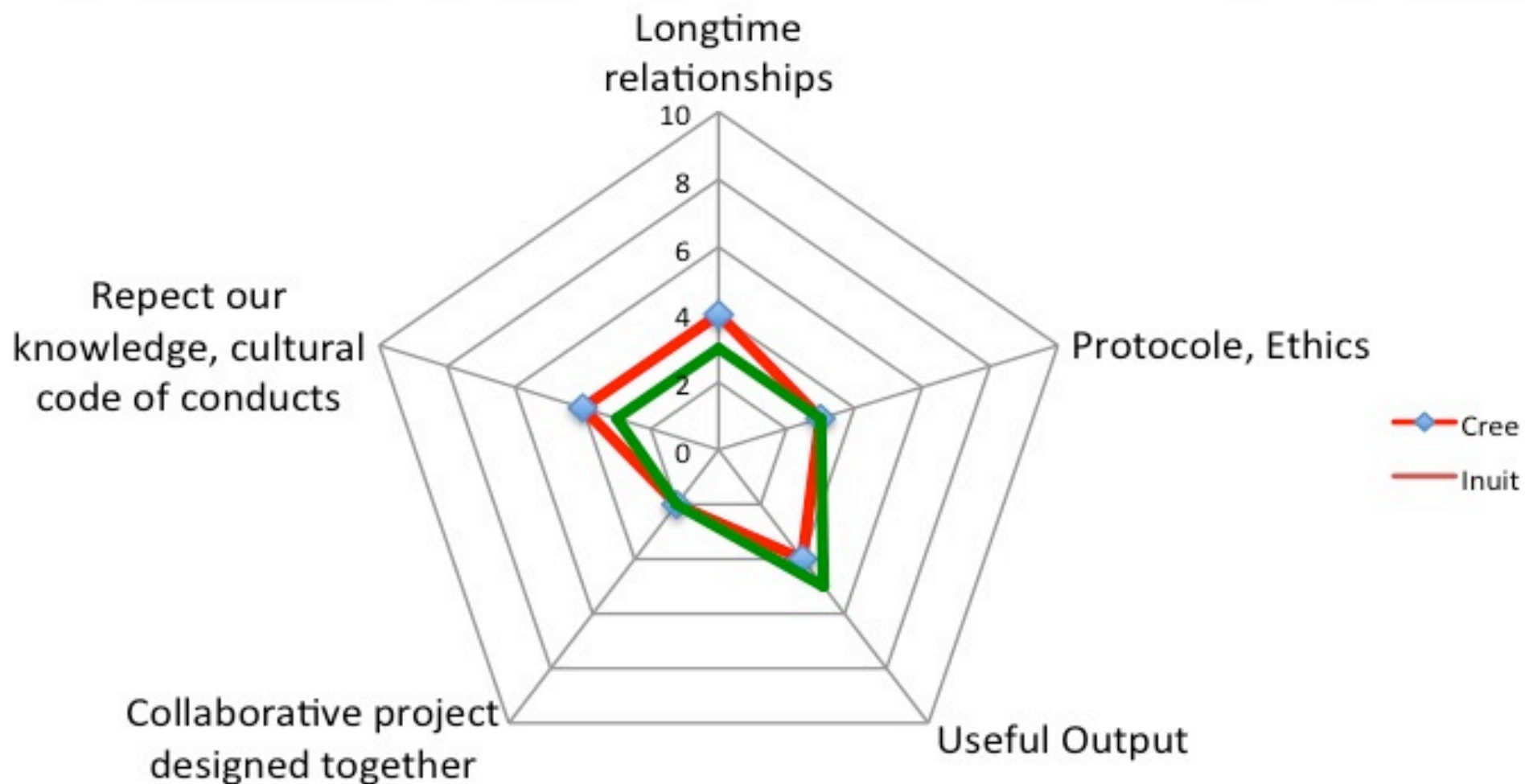
Exchange program Inuit/Saami Youth

Impact of mining development

Man & Environment Observatory



Collaborative research: what does it mean for the aboriginal communities?



TUKTU, PORO workshop in Ottawa, June 2009
collaborative research & ecotourism

Inuit, Nunavut

Inuit, Nunavik



Cree of James Bay, Québec & Ontario

Orochen, Chine



Fundings

EU Marie Curie Outgoing research fellowship
IPEV, French Polar Research Institute Institut Paul Emile Victor
SSHRC, Social Sciences Humanities Research Council

29/06/12